

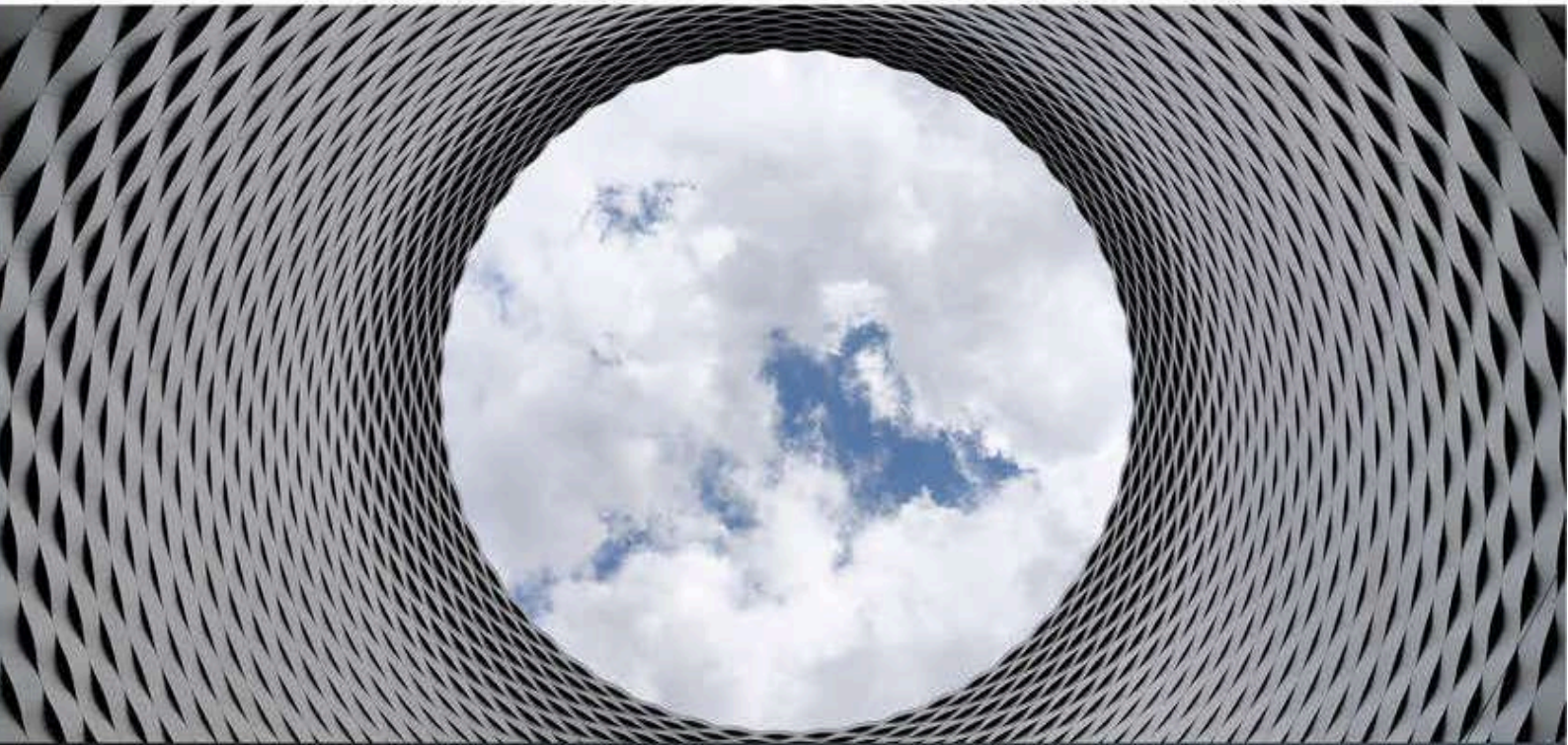
# Standard Extrusions

1.0  
Jan

## CATALOGUE 2025



  
**ALUMA**  
ALUMINIUM



## About Aluma Aluminium

Aluma Aluminium is a leading provider of high-quality aluminum extrusions, committed to delivering innovative solutions for a wide range of industries. Based in Kempton Park, South Africa, we pride ourselves on our precision engineering, durable materials, and customer-focused approach.

Copyright © 2020 Aluminium Trading Group (Pty) Ltd

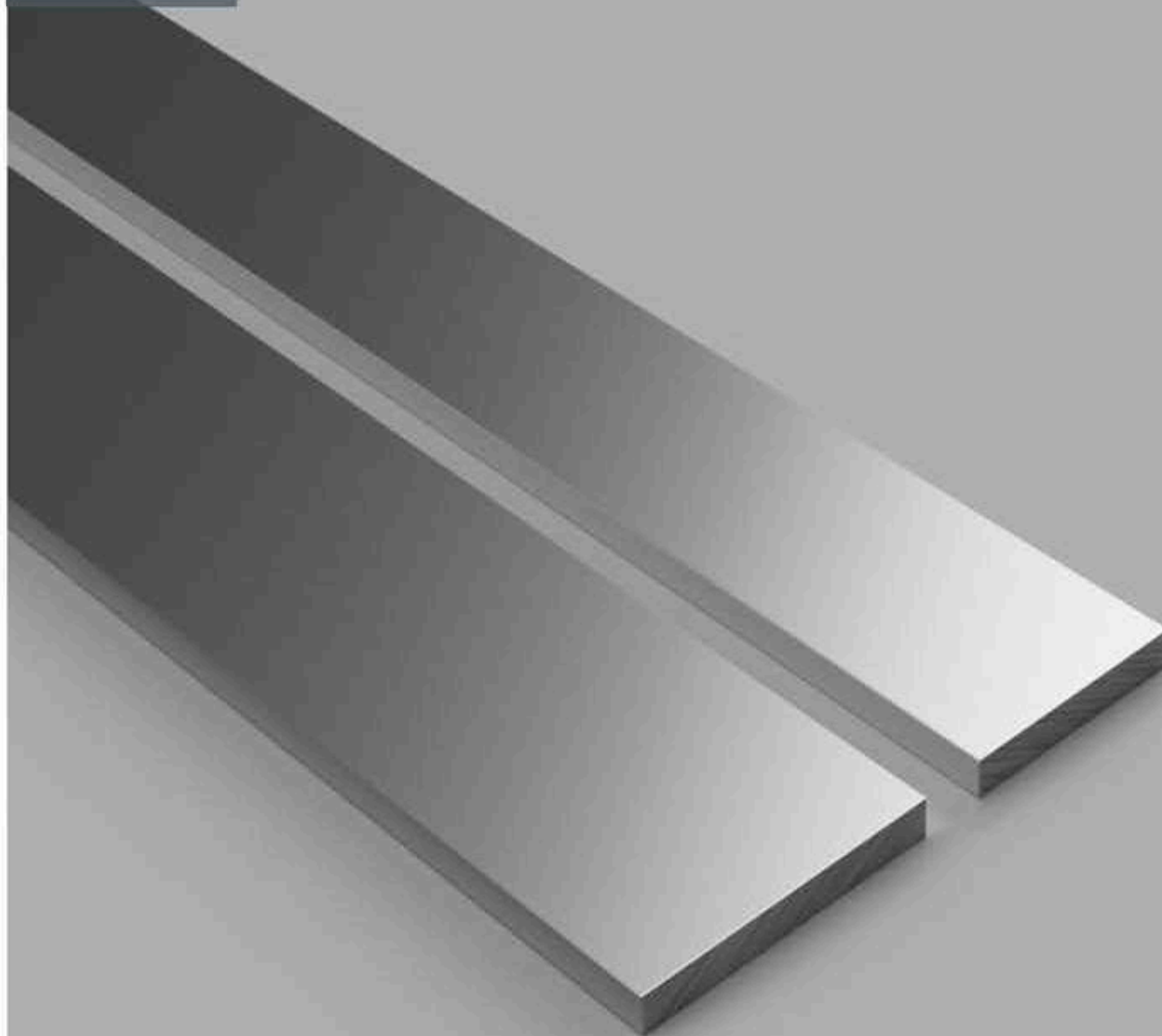
# Index

<b>03</b>	<b>ABOUT ALUMA ALUMINUM</b>
<b>04</b>	<b>FLAT BARS</b>
<b>06</b>	<b>ROUND BARS</b>
<b>08</b>	<b>SQUARE BARS</b>
<b>10</b>	<b>RECTANGULAR TUBES</b>
<b>12</b>	<b>FOILS</b>
<b>14</b>	<b>ROUND TUBES</b>
<b>16</b>	<b>SQUARE TUBES</b>
<b>18</b>	<b>OTHER TUBES</b>
<b>20</b>	<b>EQUAL ANGLES</b>
<b>22</b>	<b>UNEQUAL ANGLES</b>
<b>24</b>	<b>T - SECTIONS</b>
<b>26</b>	<b>SIGN SECTIONS</b>
<b>28</b>	<b>GLASS &amp; SLIDING GLASS SECTIONS</b>
<b>30</b>	<b>ALUMINUM TRADING EXCLUSIVE SECTIONS</b>
<b>32</b>	<b>CHANNELS</b>
<b>34</b>	<b>COVER MOULDS</b>
<b>36</b>	<b>EDGINGS &amp; TRIMS</b>
<b>38</b>	<b>TICKET HOLDERS</b>

# Flat Bars

6063T6

6061T6



Aluma Aluminum offers a wide range of flat bars crafted for durability and versatility. Available in high-quality alloys, our flat bars are ideal for various applications, from structural to decorative projects.



STOCK CODE	DIMENSIONS (mm)	ALLOY	MASS (per/m)	LENGTH (m)
ABF 100 400 30 A	10.00 x 4.00	6063T6	0,108	3,000
ABF 127 318 60 A	12.70 x 3.18	6063T6	0,109	6,000
ABF 127 636 60 A	12.70 x 6.36	6061T6	0,218	6,000
ABF 150 200 30 A	15.00 x 2.00	6063T6	0,080	3,000
ABF 158 318 60 A	15.80 x 3.18	6063T6	0,136	6,000
ABF 190 318 60 A	19.06 x 3.18	6063T6	0,164	6,000
ABF 190 478 60 A	19.06 x 4.78	6063T6	0,247	6,000
ABF 190 636 60 C	19.06 x 6.36	6061T6	0,328	6,000
ABF 254 318 60 A	25.40 x 3.18	6063T6	0,218	6,000
ABF 254 478 60 A	25.40 x 4.78	6063T6	0,329	6,000
ABF 254 636 60 C	25.40 x 6.36	6061T6	0,437	6,000
ABF 254 952 60 C	25.40 x 9.52	6061T6	0,656	6,000
ABF 2541270 60 C	25.40 x 12.70	6061T6	0,874	6,000
ABF 317 318 60 A	31.76 x 3.18	6063T6	0,272	6,000
ABF 317 478 60 A	31.76 x 4.78	6063T6	0,411	6,000
ABF 317 636 60 C	31.76 x 6.36	6061T6	0,547	6,000
ABF 381 318 60 A	38.10 x 3.18	6063T6	0,328	6,000
ABF 381 636 60 C	38.10 x 6.36	6061T6	0,656	6,000
ABF 381 952 60 C	38.10 x 9.52	6061T6	0,985	6,000
ABF 3811270 60 C	38.10 x 12.70	6061T6	1,311	6,000
ABF 508 318 60 A	50.80 x 3.18	6063T6	0,437	6,000
ABF 508 478 60 A	50.80 x 4.78	6063T6	0,656	6,000
ABF 508 636 60 C	50.80 x 6.36	6061T6	0,875	6,000
ABF 508 952 60 C	50.80 x 9.52	6061T6	1,310	6,000
ABF 5081270 60 C	50.80 x 12.70	6061T6	1,748	6,000
ABF 635 636 60 C	63.50 x 6.36	6061T6	1,094	6,000
ABF 760 160 60 A	76.20 x 1.60	6063T6	0,394	6,000
ABF 762 318 60 A	76.20 x 3.18	6063T6	0,656	6,000
ABF 762 636 60 C	76.20 x 6.36	6061T6	1,312	6,000
ABF 762 952 60 C	76.20 x 9.52	6061T6	1,965	6,000
ABF 7621270 60 C	76.20 x 12.70	6061T6	2,622	6,000
ABF1016 318 60 A	101.60 x 3.18	6063T6	0,875	6,000
ABF1016 636 60 C	101.60 x 6.36	6061T6	1,750	6,000
ABF1016 952 60 C	101.60 x 9.52	6061T6	2,621	6,000

# Round Bars

6061T6

6082T6



Aluma Aluminum's round bars are designed for versatility, lending themselves to a variety of projects, particularly those requiring smooth, cylindrical shapes.



STOCK CODE	DIAMETER (mm)	ALLOY	MASS (per/m)	LENGTH (m)
ABR 470 50 C	4.70 mm	6061T6	0,047	5,000
ABR 600 50 A	6.00 mm	6061T6	0,077	5,000
ABR 794 50 D	7.94 mm	6082T6	0,134	5,000
ABR 952 50 D	9.52 mm	6082T6	0,193	5,000
ABR 952 60 D	9.52 mm	6082T6	0,193	6,000
ABR 1270 50 D	12.70 mm	6082T6	0,343	5,000
ABR 1270 60 D	12.70 mm	6082T6	0,343	6,000
ABR 1580 50 D	15.80 mm	6082T6	0,535	5,000
ABR 1580 60 D	15.80 mm	6082T6	0,535	6,000
ABR 1906 50 D	19.06 mm	6082T6	0,772	5,000
ABR 1906 60 D	19.06 mm	6082T6	0,772	6,000
ABR 2540 50 D	25.40 mm	6082T6	1,330	5,000
ABR 2540 60 D	25.40 mm	6082T6	1,330	6,000
ABR 3170 50 D	31.70 mm	6082T6	2,145	5,000
ABR 3170 60 D	31.70 mm	6082T6	2,145	6,000
ABR 4000 50 D	40.00 mm	6082T6	3,405	5,000
ABR 4000 60 D	40.00 mm	6082T6	3,405	6,000
ABR 5080 50 D	50.80 mm	6082T6	5,493	5,000
ABR 5080 60 D	50.80 mm	6082T6	5,493	6,000
ABR 6500 10 D	65.00 mm	6082T6	9,000	1,000
ABR 7000 10 D	70.00 mm	6082T6	10,438	1,000
ABR 7620 10 D	76.20 mm	6082T6	12,369	1,000
ABR 9000 10 D	90.00 mm	6082T6	17,255	1,000
ABR10160 10 D	101.60 mm	6082T6	21,989	1,000
ABR11500 10 D	115.00 mm	6082T6	28,172	1,000
ABR12500 10 D	125.00 mm	6082T6	33,285	1,000
ABR12500 10 D	130.00 mm	6082T6	36,001	1,000
ABR14000 10 D	140.00 mm	6082T6	41,753	1,000
ABR15260 10 D	152.60 mm	6082T6	49,606	1,000
ABR16500 10 D	165.00 mm	6082T6	57,996	1,000
ABR17600 10 D	176.00 mm	6082T6	65,986	1,000
ABR19000 10 D	190.00 mm	6082T6	76,901	1,000
ABR20000 10 D	200.00 mm	6082T6	85,209	1,000
ABR25000 10 D	250.00 mm	6082T6	133,140	1,000
ABR30000 10 D	300.00 mm	6082T6	191,721	1,000

# Square Bars

6082T6



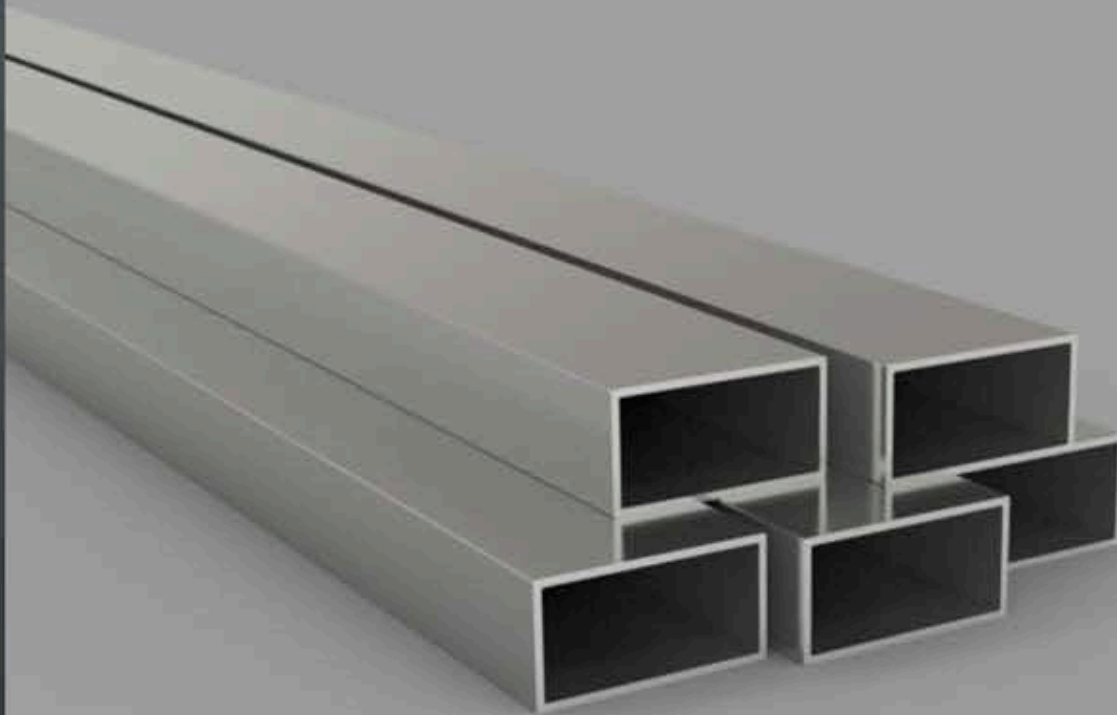
Aluma Aluminum square bars are engineered for precision and strength, making them perfect for rack building, window frames, and other structural applications.



STOCK CODE	DIAMETER (mm)	ALLOY	MASS (per/m)	LENGTH (m)
ABS 636 50 D	6.36 mm	6082T6	0,108	5,000
ABS 800 50 D	8.00 mm	6082T6	0,173	5,000
ABS 952 50 D	9.52 mm	6082T6	0,245	5,000
ABS 1270 50 D	12.70 mm	6082T6	0,437	5,000
ABS 1270 60 D	12.70 mm	6082T6	0,437	6,000
ABS 1588 50 D	15.88 mm	6082T6	0,682	5,000
ABS 1588 60 D	15.88 mm	6082T6	0,682	6,000
ABS 1906 50 D	19.06 mm	6082T6	0,983	5,000
ABS 2000 60 D	20.00 mm	6082T6	0,983	6,000
ABS 2540 50 D	25.40 mm	6082T6	1,748	5,000
ABS 3176 50 D	31.76 mm	6082T6	2,733	5,000
ABS 3176 60 D	31.76 mm	6082T6	2,733	6,000
ABS 4000 50 D	40.00 mm	6082T6	4,321	5,000
ABS 5080 50 D	50.80 mm	6082T6	6,972	5,000
ABS 5080 60 D	50.80 mm	6082T6	6,972	6,000
ABS 6000 10 D	60.00 mm	6082T6	9,732	1,000

# Rectangular Tubes

6063T6



Aluma Aluminum rectangular tubes offer exceptional strength and versatility, ideal for structural and architectural applications.



STOCK CODE	DIMENSIONS (mm)	ALLOY	MASS (per/m)	LENGTH (m)
AHC 180 120 12060 A	18.00 x 12.00 x 1.20	6063T6	0,179	6,000
AHC 200 100 20060 A	20.00 x 10.00 x 2.00	6063T6	0,282	6,000
AHC 400 200 12060 A	40.00 x 20.00 x 1.20 RC Only	6063T6	0,350	6,000
AHC 508 254 20060 A	50.80 x 25.40 x 2.00 RC or SC	6063T6	0,770	6,000
AHC 500 300 20060 A	50.00 x 30.00 x 2.00	6063T6	0,823	6,000
AHC 750 250 16060 A	75.00 x 25.00 x 1.60	6063T6	0,789	6,000
AHC 760 380 20060 A	76.20 x 38.10 x 2.00	6063T6	1,191	6,000
AHC1000 300 30060 A	100.00 x 30.00 x 3.00	6063T6	2,020	6,000
AHC1016 440 31860 A	101.06 x 44.00 x 3.18	6063T6	2,408	6,000
AHC1003 508 31860 A	100.03 x 50.00 x 3.18	6063T6	2,485	6,000
AHC1000 500 20060 A	100.00 x 50.00 x 2.00	6063T6	1,583	6,000
AHC1500 500 30060 A	150.00 x 50.00 x 3.00	6063T6	3,154	6,000
AHC2000 500 30060 A	200.00 x 50.00 x 3.00	6063T6	3,967	6,000

Width x Height x Wall Thickness

Length

Codes : RC = Round Corners  
 SC = Sharp Corners  
 Unspecified = Sharp Corners

# Foils



Aluma Aluminum's partitioning systems are modular solutions for creating partitions in offices, homes, or workshops. Available in alloy grade 6063T6, they fit various Masonite board thicknesses and are supplied in standard lengths of 3m or 6m, with cut-to-size options.

STOCK CODE	THICKNESS	CUSTOM LENGTH (mm)	ALLOY
ALF 0.3 120 - 600	0,3	120 - 600	1060
ALF 0.4 120 - 600	0,4	120 - 600	1060
ALF 0.5 120 - 600	0,5	120 - 600	1060
ALF 0.6 120 - 600	0,6	120 - 600	1060
ALF 0.8 120 - 600	0,8	120 - 600	1060
ALF 0.9 120 - 600	0,9	120 - 600	1060
ALF 1.0 120 - 600	1.0	120 - 600	1060
ALF 1.2 120 - 600	1,2	120 - 600	1060
ALF 1.6 120 - 600	1,6	120 - 600	1060
ALF 2.0 120 - 600	2.0	120 - 600	1060

# Round Tubes

6063T6

6061T6



Aluma Aluminum's round tubes are perfect for applications requiring lightweight, corrosion-resistant materials, such as in plumbing or structural frameworks.



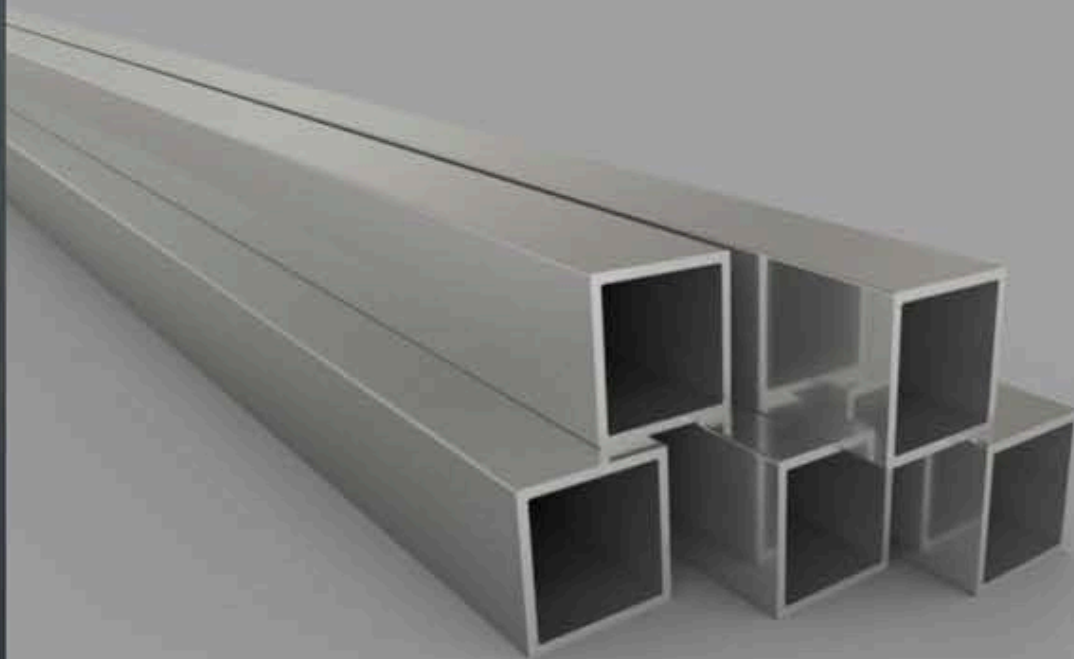
STOCK CODE	DIMENSIONS (mm)	ALLOY	MASS (per/m)	LENGTH (m)
AHR 80 100 60 A	8.00 x 1.00 (6.00 - ID)	6063T6	0,060	6,000
AHR 95 122 60 A	9.50 x 1.22 (7.06 - ID)	6063T6	0,086	6,000
AHR 127 120 60 A	12.70 x 1.20 (10.30 - ID)	6063T6	0,119	6,000
AHR 127 160 60 A	12.70 x 1.60 (9.50 - ID)	6063T6	0,153	6,000
AHR 127 318 60 A	12.70 x 3.18 (6.34 - ID)	6063T6	0,257	6,000
AHR 158 162 60 A	15.80 x 1.62 (12.56 - ID)	6063T6	0,197	6,000
AHR 190 120 60 A	19.06 x 1.20 (16.66 - ID)	6063T6	0,185	6,000
AHR 190 150 60 A	19.06 x 1.62 (15.82 - ID)	6063T6	0,241	6,000
AHR 190 318 60 A	19.06 x 3.18 (12.70 - ID)	6063T6	0,430	6,000
AHR 222 120 60 A	22.20 x 1.22 (19.76 - ID)	6063T6	0,218	6,000
AHR 222 160 60 A	22.20 x 1.60 (19.00 - ID)	6063T6	0,284	6,000
AHR 254 120 60 A	25.40 x 1.20 (23.00 - ID)	6063T6	0,251	6,000
AHR 254 160 60 A	25.40 x 1.60 (22.20 - ID)	6063T6	0,328	6,000
AHR 254 318 60 A	25.40 x 3.18 (19.04 - ID)	6063T6	0,601	6,000
AHR 285 110 60 A	28.58 x 1.1 (26.15 - ID)	6063T6	0,260	6,000
AHR 317 162 60 A	31.76 x 1.62 (28.52 - ID)	6063T6	0,416	6,000
AHR 317 318 60 A	31.70 x 3.18 (25.40 - ID)	6063T6	0,774	6,000
AHR 350 160 60 A	35.00 x 1.60 (31.72 - ID)	6063T6	0,455	6,000
AHR 381 150 60 A	38.10 x 1.50 (35.10 - ID)	6063T6	0,467	6,000
AHR 381 318 60 A	38.10 x 3.18 (31.74 - ID)	6063T6	0,945	6,000
AHR 450 200 60 A	45.00 x 2.00 (41.00 - ID)	6063T6	0,732	6,000
AHR 508 162 60 A	50.80 x 1.62 (47.56 - ID)	6063T6	0,678	6,000
AHR 508 318 60 A	50.80 x 3.18 (44.44 - ID)	6061T6	1,289	6,000
AHR 508 478 60 A	50.80 x 4.78 (40.00 - ID)	6061T6	1,871	6,000
AHR 603 392 60 A	60.32 x 3.92 (52.48 - ID)	6063T6	1,883	6,000
AHR 635 250 60 A	63.50 x 2.50 (58.50 - ID)	6063T6	1,298	6,000
AHR 761 127 60 A	76.10 x 1.27 (74.00 - ID)	6063T6	0,810	6,000
AHR 762 318 60 A	76.20 x 3.18 (69.84 - ID)	6061T6	1,976	6,000
AHR 889 478 60 A	88.90 x 4.78 (79.34 - ID)	6061T6	3,420	6,000
AHR1016 320 60 A	101.60 x 3.20 (95.20 - ID)	6061T6	2,728	6,000
AHR1079 320 60 A	107.96 x 3.20 (101.56 - ID)	6063T6	2,832	6,000
AHR1270 350 60 A	127.00 x 3.50 (120.00 - ID)	6063T6	3,678	6,000
AHR1692 370 60 A	169.28 x 3.70 (161.88 - ID)	6063T6	5,214	6,000

Outer Diameter x Wall Thickness  
(ID) = Inner Diameter

Length

# Square Tubes

6063T6



Aluma Aluminum square tubes are designed for structural applications, offering strength and a sleek appearance for modern designs.



STOCK CODE	DIMENSIONS (mm)	ALLOY	MASS (per/m)	LENGTH (m)
AHS 120 120 16060 A	12.00 x 12.00 x 1.60	6063T6	0,189	6,000
AHS 158 158 15760 A	15.88 x 15.88 x 1.57	6063T6	0,244	6,000
AHS 190 190 16260 A	19.06 x 19.06 x 1.62	6063T6	0,299	6,000
AHS 254 254 12060 A	25.40 x 25.40 x 1.20 SC	6063T6	0,314	6,000
AHS 254 254 12060 R	25.40 x 25.40 x 1.20 RC	6063T6	0,284	6,000
AHS 254 254 20060 R	25.40 x 25.40 x 2.00 RC/SC	6063T6	0,491	6,000
AHS 250 250 30060 A	25.00 x 25.00 x 3.26	6063T6	0,745	6,000
AHS 317 317 16060 A	31.70 x 31.70 x 1.60	6063T6	0,523	6,000
AHS 317 317 31860 A	31.70 x 31.70 x 3.18	6063T6	0,985	6,000
AHS 381 381 20360 A	38.10 x 38.10 x 2.04	6063T6	0,791	6,000
AHS 381 381 31860 A	38.10 x 38.10 x 3.18	6063T6	1,203	6,000
AHS 508 508 20360 A	50.80 x 50.80 x 2.03	6063T6	1,026	6,000
AHS 508 508 31860 A	50.80 x 50.80 x 3.26	6063T6	1,680	6,000
AHS 600 600 30060 A	60.00 x 60.00 x 3.00	6063T6	1,854	6,000
AHS 780 780 20060 A	78.00 x 78.00 x 2.00	6063T6	1,656	6,000
AHS10001000 20060 A	100.00 x 100.00 x 2.00	6063T6	2,125	6,000
AHS11451145 20060 A	114.50 x 114.50 x 2.00	6063T6	2,441	6,000
AHS15001500 25060 A	150.00 x 150.00 x 2.0	6063T6	3,997	6,000

Width x Height x Wall Thickness

Length

Codes :

# Other Tubes

Mast Section 1



6063T6  
6063T8

Mast Section 3



Mast Section 2



Mast Section 4



Fluted Tube



Oval Hanger Rail



Coffin Handle



Oval Ladder Rail



Aluma Aluminum offers a variety of specialty tubes for unique applications, ensuring flexibility for custom projects.



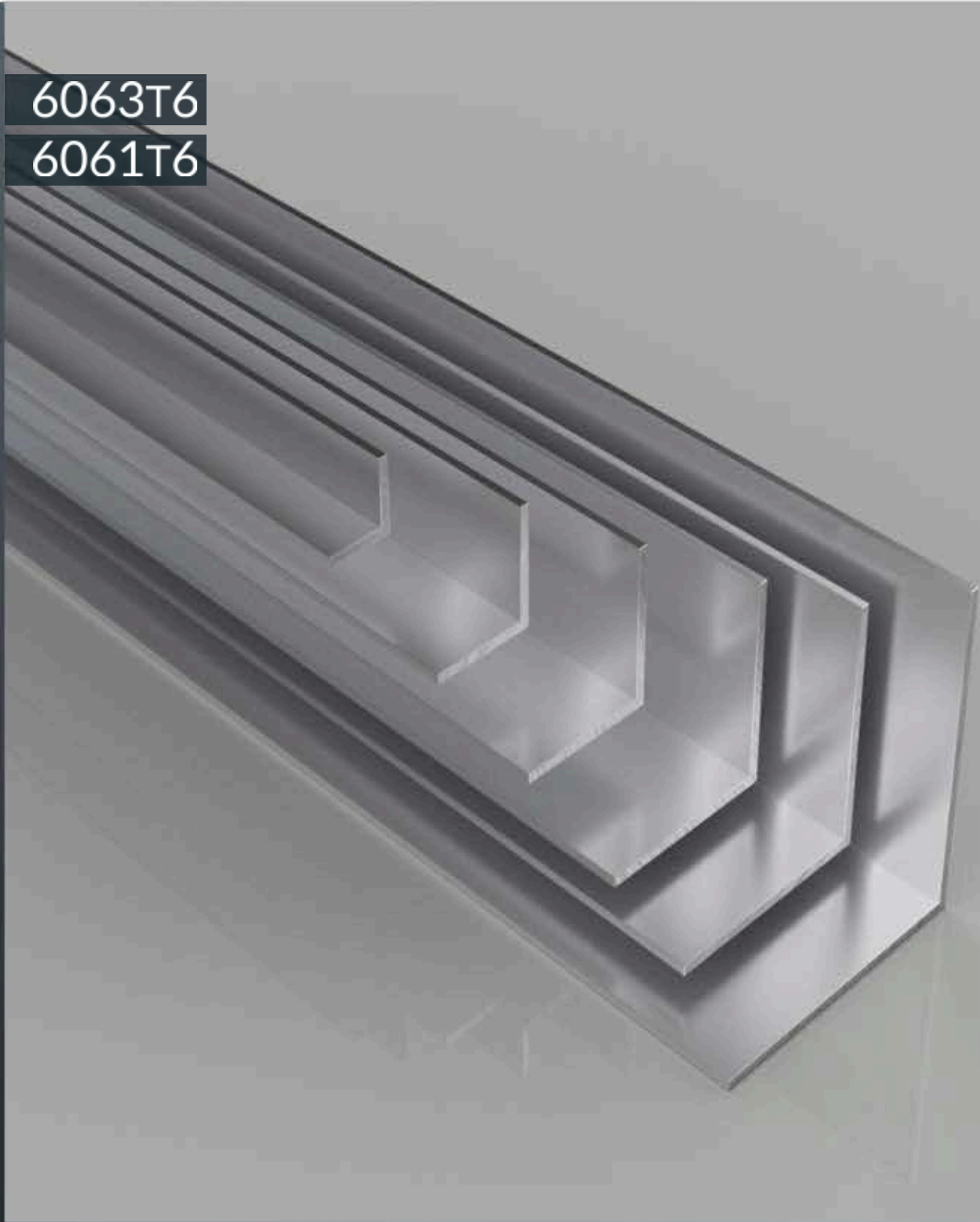
STOCK CODE	DESCRIPTION	ALLOY	MASS (per/m)	LENGTH (m)
AHRMAST1 30 A	Mast Section 1	6063T6	0,882	3,000
AHRMAST2 30 A	Mast Section 2	6063T6	0,903	3,000
AHRMAST3 30 A	Mast Section 3	6063T6	0,812	3,000
AHRMAST4 30 A	Mast Section 4	6063T6	0,614	3,000
AHRFLUTED 50 A	Fluted Tube	6063T6	0,366	5,000
AHRHANGER 60 A	Oval Hanger Rail	6063T6	0,269	6,000
AHRCOFFIN 60 A	Coffin Handle	6063T6	0,216	6,000
AHRLADDER 60 A	Oval Ladder Rail 63 x 25 x 2	6063T8	0,772	6,000



# Equal Angles

6063T6

6061T6



Aluma Aluminum's equal angles are ideal for structural support in construction and manufacturing, providing uniform strength.



STOCK CODE	DIMENSIONS (mm)	ALLOY	MASS / M	LENGTH (m)
AAE 127 127 16060 A	12.70 x 12.70 x 1.57	6063T6	0,101	6,000
AAE 127 127 31860 A	12.70 x 12.70 x 3.18	6063T6	0,191	6,000
AAE 150 150 16060 A	15.00 x 15.00 x 1.50	6063T6	0,123	6,000
AAE 150 150 31860 A	15.00 x 15.00 x 3.18	6063T6	0,246	6,000
AAE 190 190 16060 A	19.06 x 19.06 x 1.60	6063T6	0,157	6,000
AAE 190 190 31860 A	19.06 x 19.06 x 3.18	6063T6	0,303	6,000
AAE 254 254 15260 A	25.40 x 25.40 x 1.52	6063T6	0,203	6,000
AAE 254 254 31860 A	25.40 x 25.40 x 3.18	6063T6	0,410	6,000
AAE 254 254 63660 A	25.40 x 25.40 x 6.36	6061T6	0,766	6,000
AAE 317 317 16060 A	31.70 x 31.70 x 1.60	6063T6	0,268	6,000
AAE 317 317 31860 A	31.70 x 31.70 x 3.18	6063T6	0,519	6,000
AAE 317 317 63660 A	31.70 x 31.70 x 6.36	6061T6	0,985	6,000
AAE 381 381 20460 A	38.10 x 38.10 x 2.04	6063T6	0,409	6,000
AAE 381 381 31860 A	38.10 x 38.10 x 3.18	6063T6	0,629	6,000
AAE 381 381 63660 A	38.10 x 38.10 x 6.36	6061T6	1,203	6,000
AAE 500 500 20060 A	50.00 x 50.00 x 2.00	6063T6	0,531	6,000
AAE 500 500 30060 A	50.80 x 50.80 x 3.18	6063T6	0,848	6,000
AAE 500 500 47460 A	50.80 x 50.80 x 4.74	6063T6	1,243	6,000
AAE 500 500 60060 A	50.80 x 50.80 x 6.36	6061T6	1,639	6,000
AAE 760 760 20060 A	76.00 x 76.00 x 2.00	6063T6	0,813	6,000
AAE 760 760 30060 A	76.20 x 76.20 x 3.18	6063T6	1,286	6,000
AAE 760 760 47860 A	76.20 x 76.20 x 4.78	6063T6	1,912	6,000
AAE 760 760 63660 A	76.20 x 76.20 x 6.36	6061T6	2,513	6,000
AAE10001000 30060 A	100.00 x 100.00 x 3.00	6061T6	1,602	6,000

Leg 'A' Width x Leg 'B' Width x Leg Thickness

Length

# Unequal Angles

6063T6

6061T6



Aluma Aluminum's unequal angles offer flexibility for projects requiring non-uniform structural support.



STOCK CODE	DIMENSIONS (mm)	ALLOY	MASS / M	LENGTH (m)
AAU 127 95 15760 A	12.70 x 9.53 x 1.57	6063T6	0,090	6,000
AAU 158 95 16060 A	15.88 x 9.52 x 1.60	6063T6	0,102	6,000
AAU 190 127 15860 A	19.06 x 12.70 x 1.58	6063T6	0,128	6,000
AAU 222 95 16060 A	22.22 x 9.52 x 1.60	6063T6	0,129	6,000
AAU 250 120 15060 A	25.00 x 12.00 x 1.50	6063T6	0,146	6,000
AAU 254 127 31860 A	25.40 x 12.70 x 3.18	6063T6	0,301	6,000
AAU 317 190 31860 A	31.76 x 19.06 x 3.18	6063T6	0,410	6,000
AAU 381 254 31860 A	38.10 x 25.40 x 3.18	6063T6	0,519	6,000
AAU 444 222 20460 A	44.46 x 22.22 x 2.04	6063T6	0,356	6,000
AAU 444 222 31860 A	44.46 x 22.22 x 3.18	6063T6	0,548	6,000
AAU 500 250 16060 A	50.80 x 25.40 x 1.60	6063T6	0,322	6,000
AAU 500 250 30060 A	50.80 x 25.40 x 3.18	6063T6	0,629	6,000
AAU 650 450 30060 A	65.00 x 45.00 x 3.00	6063T6	0,875	6,000
AAU 750 250 20060 A	75.00 x 25.00 x 1.6	6063T6	0,531	6,000
AAU 762 381 31860 A	76.20 x 38.10 x 3.18	6063T6	0,957	6,000
AAU1000 500 60060 A	100.00 x 50.00 x 6.00	6061T6	2,341	6,000
AAU1270 580 20060 A	127.00 x 50.80 x 2.02	6063T6	0,951	6,000
AAU1500 450 50060 A	150.00 x 45.00 x 5.00	6063T6	2,588	6,000
AAU1500 500 60060 A	150.00 x 50.00 x 6.00	6061T6	3,154	6,000

# T-Sections

6063T6

Ceiling T



Jointing T



Knobbling T



Playboy T



Banana T



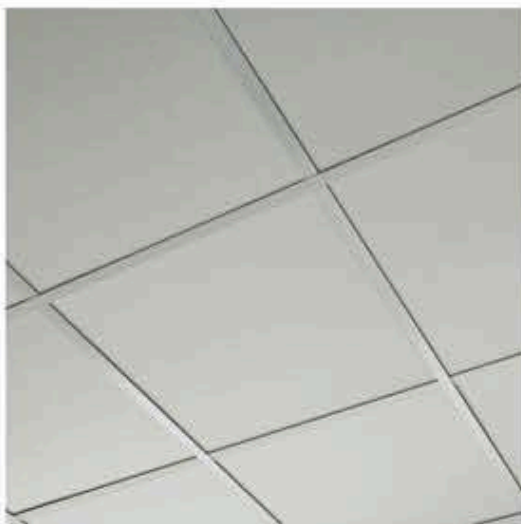
Aluma Aluminum's T-sections provide excellent load-bearing capabilities, perfect for construction and framework applications.



STOCK CODE	DIMENSIONS (mm) / DESCRIPTION	ALLOY	MASS / M	LENGTH (m)
AT 190 190 31860ANA	19.06 x 19.06 x 3.18	6063T6	0,301	6,000
AT 254 254 31860 A	25.40 x 25.40 x 3.18	6063T6	0,409	6,000
AT 380 380 30060 A	38 x 38 x 3	6063T6	0,628	6,000
AT 400 200 30060 A	40 x 20 x 3	6063T6	0,463	6,000
AT 508 508 63660 A	50 x 50 x 3	6063T6	0,788	6,000
AT CEILING T 60 A	Ceiling T	6063T6	0,263	6,000
AT JOINTING T 50 A	Jointing T	6063T6	0,097	5,000
AT KNOBBLING T 48 A	Knobbling T	6063T6	0,201	4,800
AT PLAYBOY T 60 A	Playboy T	6063T6	0,136	6,000
AT BANANA T 60 A	Banana T	6063T6	0,243	6,000

Horizontal Leg Width x Vertical Leg Width x Leg Thickness

Length



# Sign Sections

6063T6

QB Sign Section



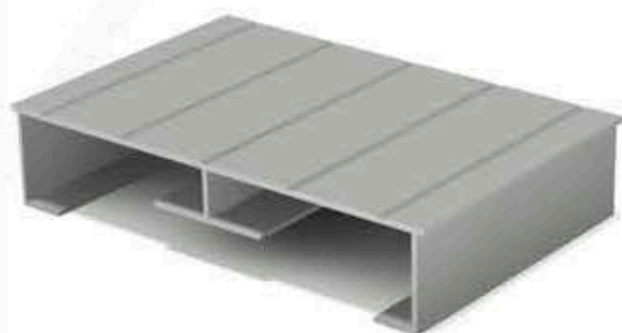
Display h-Section



Safety Sign Section



Mae West Section



Mae West Corner



Aluma Aluminum's sign sections are designed for creating durable, lightweight signage frameworks.



STOCK CODE	DESCRIPTION	ALLOY	MASS / M	LENGTH (m)
ADSQB 60 A	QB Sign Section	6063T6	0.875	6
ADSMAEWEST 60 A	Mae West Section	6063T6	1.437	6
ADSSAFETY 30 A	Safety Sign Section	6063T6	0.150	3
ADSHSML35 60 A	Display Section 3.5mm Baby h	6063T6	0.212	6
ADSHMED60 60 A	Display Section 6.0mm Medium h	6063T6	0.343	6
ADSHLRG70 60 A	Display Section 7.0mm Large h	6063T6	0.618	6
ADSMAEWEST CNR	Mae West Corner	NA	NA	NA



# Glass & Sliding Glass Sections

6063T6

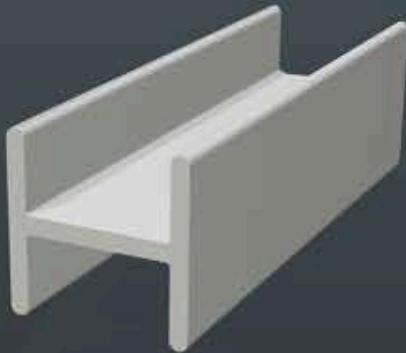
AC 95 Channel



No.5 F-Channel



No.6 Small H-Channel



SL SG Top Guide



SL SG Bottom Rail



SL SG Rail Track



Aluma Aluminum provides specialized sections for glass and sliding glass applications, ideal for doors, windows, and partitions.



STOCK CODE	DIMENSIONS (mm) / DESCRIPTION	ALLOY	MASS / M	LENGTH (m)
AC 95 95 16060 A	9.52 x 9.52 x 1.60	6063T6	0,110	6,000
AC 95 127 16060 A	9.52 x 12.70 x 1.60	6063T6	0,138	6,000
AC 95 190 16060 A	9.52 x 19.06 x 1.58	6063T6	0,193	6,000
ACF NO5F 60 A	NO 5 F CHANNEL	6063T6	0,202	6,000
ACH NO 6 60 A	NO 6 SMALL H CHANNEL	6063T6	0,179	6,000
SLIDING GLASS SECTIONS				
AGS 6 TOPGUIDE 60 A	SL SG Top Guide	6063T6	0,255	6,000
AGS 6 BOTTRAIL 60 A	SL SG Bottom Rail	6063T6	0,272	6,000
AGS 6 RAILTRACK60 A	SL SG Rail Track	6063T6	0,175	6,000
ATGH - SGROLLER	SG Rollers - Nylon wheel	NA	NA	NA
ATGH - SGENDCAPB	SG End Caps	NA	NA	NA
ATGH - SGLOCK	SG Locks	NA	NA	NA



# Aluminium Trading Exclusive Sections

5 CD Rack Section



DVD Rack Section



Seat Rail



50mm D Section



Lid Locator



Sliding Track



Thresh Hold (Narrow)



Thresh Hold Clip (Narrow)



Thresh Hold (Wider)



ATC 38mm Round Clip Top



ATC 38mm Clip Base



Meat Rack Section



Glass Handrail



Brush Pile



Return Lip Channel



Straight Edge



Straight Edge



Our exclusive sections are custom-designed by Aluma Aluminum for unique applications, offering innovative solutions for specialized projects.



STOCK CODE	DESCRIPTION	ALLOY	MASS (per/m)	LENGTH (m)
AXRACKCD5 60 A	5 CD Rack Section	6063T6	0,836	6,000
AXRACKDVD 60 A	DVD Rack Section	6063T6	1,049	6,000
AXSEATRIL 50 A	Seat Rail	6063T6	1,279	5,000
AX50DSECT 60 A	50mm D Section	6063T6	0,455	6,000
AXLIDLOCATOR 60 A	Lid Locator	6063T6	0,425	6,000
AXSTRACKCOOL 60 A	Sliding Track (Cool Shade)	6063T6	0,363	6,000
AXTHRESHOLDN 50 A	Threshold (Narrow)	6063T6	0,612	5,000
AXT/H BASE CLIP 5m	Threshold Clip (Narrow)	6063T6	0,536	5,000
AXTHRESHOLDWIDE30 A	Threshold (Wider)	6063T6	0,885	3,000
AX38RNDTOP 60 A	ATC 38mm Round Clip Top	6063T6	0,238	6,000
AX38RNDBASE 60 A	ATC 38mm Clip Base	6063T6	0,167	6,000
AXMEATRACK 60 A	Meat Rack Section	6061T6	0,347	6,000
AGS HANDRAIL 60 A	Glass Handrail	6063T6	1,232	6,000
AXBRUSH 60 A	Brush Pile	6063T6	0,156	6,000
AXRETURN LIP CHANNEL	Return Lip Channel 30 x 9	6063T6	0,339	6,000
AXRET LIP CHAN 38MM	Return Lip Channel 38 x 12.7	6063T6	0,625	6,000
AXEDGESTRAIGHT 60 A	Straight Edge	6063T6	0,846	6,000
AXSNAPPERT - NO LIP	Snapper Clip Top	6063T6	0,117	3,000
AXSNAPPERB1	Snapper Clip Base	6063T6	0,123	3,000
ATG-200179 6000 2 A	16mm Cupboard Corner	6063T6	0,550	6,000

# Channels

6063T6

6061T6



Aluma Aluminum's channels are perfect for structural applications, providing strength and versatility for frameworks and supports.



STOCK CODE	DIMENSIONS (mm)	ALLOY	MASS (per/m)	LENGTH (m)
AXSLATWALL 37 A	Slatwall Section	6063T6	0,203	3,700
AC 95 95 16060 A	9.52 x 9.52 x 1.60	6063T6	0,110	6,000
AC 95 127 16060 A	9.52 x 12.70 x 1.60	6063T6	0,138	6,000
AC 95 190 16060 A	9.52 x 19.06 x 1.58	6063T6	0,190	6,000
AC 127 95 15260 A	12.70 x 9.52 x 1.52	6063T6	0,117	6,000
AC 127 127 20460 A	12.70 x 12.70 x 2.04	6063T6	0,187	6,000
AC 158 158 16060 A	15.88 x 15.88 x 1.60	6063T6	0,192	6,000
AC 190 127 16060 A	19.06 x 12.70 x 1.60	6063T6	0,178	6,000
AC 190 127 31860 A	19.06 x 12.70 x 3.18	6063T6	0,327	6,000
AC 195 195 12060 A	19.52 x 19.52 x 1.20	6063T6	0,183	6,000
AC 210 210 12060 A	21.06 x 21.06 x 1.20	6063T6	0,198	6,000
AC 238 229 14060 A	23.82 x 22.98 x 1.4	6063T6	0,252	6,000
AC 254 127 31860 A	25.40 x 12.70 x 3.18	6063T6	0,383	6,000
AC 254 254 31860 A	25.40 x 25.40 x 3.18	6063T6	0,601	6,000
AC 271 250 30060 A	27.00 x 25.00 x 3.00	6063T6	0,578	6,000
AC 350 250 14060 A	35.00 x 25.00 x 1.40	6063T6	0,310	6,000
AC 381 127 31860 A	38.10 x 12.70 x 3.00	6063T6	0,492	6,000
AC 381 190 31860 A	38.10 x 19.06 x 3.00	6063T6	0,601	6,000
AC 381 254 31860 A	38.10 x 25.00 x 3.18	6063T6	0,711	6,000
AC 444 190 16060 A	44.46 x 19.06 x 1.60	6063T6	0,328	6,000
AC 475 190 15260 A	47.50 x 19.06 x 1.52	6063T6	0,341	6,000
AC 508 250 31860 A	50.80 x 25.00 x 3.18	6063T6	0,820	6,000
AC 600 400 30060 A	60.00 x 40.00 x 3.00	6063T6	1,089	6,000
AC 760 200 15060 A	76.00 x 20.00 x 1.50	6063T6	0,459	6,000
AC 762 381 31860 A	76.20 x 38.10 x 3.18	6063T6	1,258	6,000
AC 762 381 63660 A	76.20 x 38.10 x 6.36	6061T6	2,407	6,000
AC 1016 508 31860 A	101.60 x 50.80 x 3.18	6063T6	1,695	6,000
AC 1016 508 63660 A	101.60 x 50.80 x 6.36	6061T6	3,280	6,000



Slatwall Section



9.52 x 9.52 x 1.6



38.10 x 12.70 x 3.00

# Cover Moulds

6063T6



Aluma Aluminum’s cover moulds are designed for finishing touches, providing a sleek appearance for various applications.

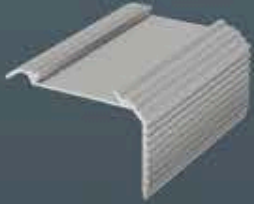


STOCK CODE		DIMENSIONS (mm)	ALLOY	MASS (per/m)	LENGTH (m)
ACM 190	60 A	19.06 mm	6063T6	0,161	6,000
ACM 254	60 A	25.40 mm	6063T6	0,223	6,000
ACM 381	60 A	38.10 mm	6063T6	0,344	6,000
ACM 640	60 A	63.50 mm	6063T6	0,444	6,000

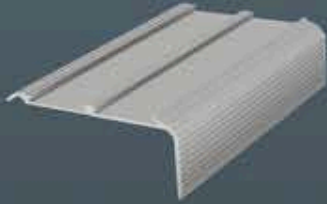


# Edgings & Trim

Single Step Edge



Double Stair Nosing



Heavy Duty Step Edge



No.1 Table Edge



20542 Table Edging



Fluted Table Edge



Rope Rail Section



Stone House Rope Rail



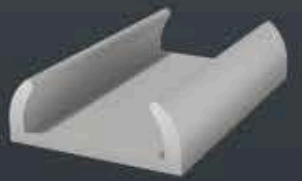
No.2 Gutter



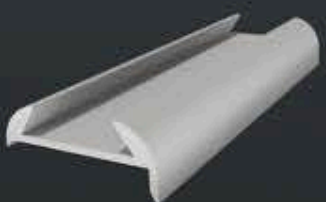
1858 Boat Trim



25mm Boat Trim



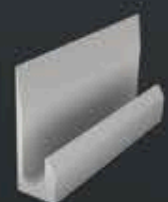
"O" Boat Trim



Panel Divider



End Section



Cupboard Handle



Aluma Aluminum's edgings and trim provide a polished finish for projects, enhancing both functionality and aesthetics.



STOCK CODE	DESCRIPTION	ALLOY	MASS (per/m)	LENGTH (m)
AXSTAIRNOSING	Single Step Edge with Insert	6063T6	0,349	6,000
AXSTAIRNOSING2	Double Stair Nosing	6063t6	0,462	6,000
ATGH - SEIBLACK	Step Edge Insert			
AXHSTEPEDGE 60 A	Heavy Duty Step Edge	6063T6	0,338	6,000
AXTEDGENO1 60 A	No 1 N/Type Table Edge	6063T6	0,187	6,000
AXTEDGE20542 60 A	20542 Table Edging	6063T6	0,112	6,000
AXTEDGEFLUTED 60 A	Fluted Table Edge	6063T6	0,122	6,000
AXROPEHEAVY 60 A	Heavy Duty Rope Rail Section	6063T6	0,421	6,000
AXROPELIGHT T6 60 A	Light Duty Rope Rail	6063T4&T6	0,291	6,000
AXROPESTONE 60 A	Stone House Rope Rail	6063T6	0,233	6,000
AX2GUTTER 60 A	No 2 Gutter	6063T6	0,174	6,000
AXBOATTRIM1858 60 A	1858 Boat Trim	6063T4	0,110	6,000
ATGH - 1858BTI	1858 Insert			
AXBOATTRIM25MM 60 A	25mm Boat Trim	6063T4	0,245	6,000
ATGH - 25BTI	25mm Insert			1,000
AXBOATTRIMO 60 A	"O" Boat Trim	6063T4	0,341	6,000
ATGH - OBTI	O Boat Insert			1,000
AXPANELDIV 60 A	Panel Divider	6063T6	0,294	6,000
AXENDSECTION 60 A	End Section	6063T6	0,179	6,000
AX20CUPHANDLE 60 A	20mm Cupboard Handle	6063T6	0,425	6,000

# Ticket Holders

6063T6



Aluma Aluminum's ticket holders are designed for retail and display applications, offering a sleek and durable solution.



STOCK CODE	DESCRIPTION	ALLOY	MASS (per/m)	LENGTH (m)
ADTH25 30 A	25mm Ticket Holder	6063T6	0,111	3,000
ADTH40 30 A	40mm Ticket Holder	6063T6	0,158	3,000
ADTH50 30 A	50mm Ticket Holder	6063T6	0,189	3,000
ADTHS50 30 A	50mm Special Ticket Holder	6063T6	0,224	3,000
ADTNS25 30 A	25mm Name Stand	6063T6	0,166	3,000



# CONTACT US

Aluma Aluminum

Reg: 2019 / 566476 / 07

Address: 209 Charles Road, Bredell, Kempton Park, 1619, South Africa

Email: [sales@alumaaluminum.co.za](mailto:sales@alumaaluminum.co.za)

[info@alumaaluminum.co.za](mailto:info@alumaaluminum.co.za)

Tel: 011 568 4163

Website: [www.alumaaluminium.co.za](http://www.alumaaluminium.co.za)

All assistance and advice provided by Aluma Aluminum, including information on its website, downloaded materials, drawings, literature, and sales promotion material, or by its personnel, agents, or representatives, is offered in good faith. Such assistance is not intended to form part of any contract, nor does it serve as a guarantee or warranty of any Aluma Aluminum product or design for any specific purpose. No liability can be accepted for errors contained in such advice, drawings, or information.

You are advised to verify all information provided by Aluma Aluminum with other sources. Written and drawn specifications, test results, and all information received from Aluma Aluminum are intended as suggestions only; their accuracy cannot be guaranteed in any way.

© 2025 Aluma Aluminum. All rights reserved.